



DESIGNED | *to inspire*

COSMO SERIES
Direct Vent Gas Fireplaces

COSMO

A modern marvel

Add superior technology and distinct design to any space. Cosmo gas fireplaces provide warmth, ambiance and chic contemporary detail. High-efficiency performance and multiple finishing options create a serene atmosphere and unique look. Deliver a bold design statement—through a functional focal point. Experience the Cosmo.



Above: Cosmo 32 shown with tonic front in new bronze with log set.

Cover: Cosmo 42 shown tonic front in fog with black glass media.

COSMO SERIES



CUSTOM CONTEMPORARY DESIGN

Create a custom look with a variety of media and interior options—from jagged glass rocks, to smooth beads or fiber stones. Stunning fronts and finishes add dimension and impact.

Cosmo 32 shown above with martini front in ebony with ceramic fiber stone media and reflective glass liner kit.



STYLE REFLECTED

Augment the ambiance and create a mood so cool, it's hot. A reflective glass liner radiates the fire and intensifies the ribbon of flames.

Cosmo 32 shown above with reflective glass liner.

MEDIA & INTERIOR OPTIONS



Black Glass



Crystal Glass



Cobalt Glass



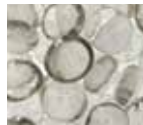
Amber Glass



Black Glass Beads



White Glass Beads



Clear Glass Beads



Ceramic Fiber Stones



Log Set



Reflective Glass Liner

FRONT OPTIONS



Martini - Angle mitred frame with tinted glass.

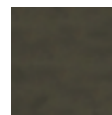


Tonic - One-piece frame with mesh.

FRONT FINISH OPTIONS



Graphite



New Bronze



Ebony



Fog

INTELLIFIRE IGNITION SYSTEM

The IntelliFire™ Ignition System (IPI) is an advanced intermittent pilot ignition system. IPI constantly monitors ignition, ensures safe functioning and conserves up to \$10/month in energy costs. To learn more, scan the code with your smartphone, or visit heatnglo.com.



DIRECT VENT TECHNOLOGY

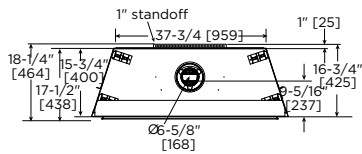
Direct Vent fireplaces remove 100% of combustion exhaust and odors outside of the home. These sealed fireplaces provide optimal heat, conserve energy and ensure clean, safe indoor air quality. To learn more about Direct Vent Technology, scan the code to the right with your smartphone, or visit heatnglo.com.



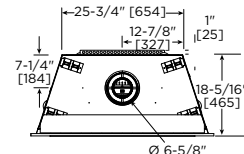
COSMO SERIES SPECIFICATIONS

MODEL	FRONT WIDTH		BACK WIDTH		HEIGHT		DEPTH		GLASS SIZE ¹	BTU/HOUR INPUT
	UNIT	FRAMING	UNIT	FRAMING	UNIT	FRAMING	UNIT	FRAMING		
COSMO 42	48 (1219mm)	50 (1270mm)	37-3/4 (959mm)	50 (1270mm)	41-3/4 (1061mm)	42-1/4 (1073mm)	16-3/4 (426mm)	18-1/4 (465mm)	39-1/16 x 13-1/4 (993mm x 337mm)	26,000 (NG) 25,000 (LP)
COSMO 32	36-3/4 (933mm)	37-3/4 (959mm)	25-3/4 (654mm)	37-3/4 (965mm)	36 (914mm)	36-1/2 (927mm)	18-5/16 (465mm)	18-1/4 (465mm)	27-1/4 x 13-1/4 (692mm x 337mm)	20,000 (NG) 17,500 (LP)

COSMO 42 DIMENSIONS
TOP VIEW



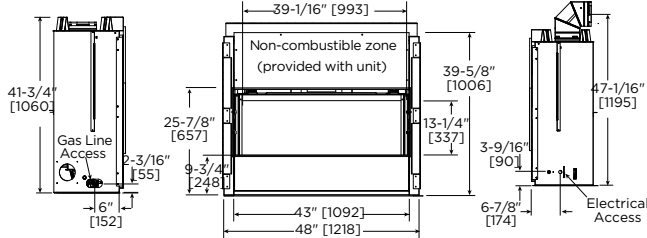
COSMO 32 DIMENSIONS
TOP VIEW



LEFT SIDE VIEW

FRONT VIEW

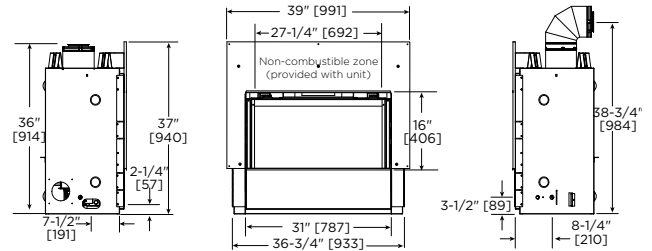
RIGHT SIDE VIEW



LEFT SIDE VIEW

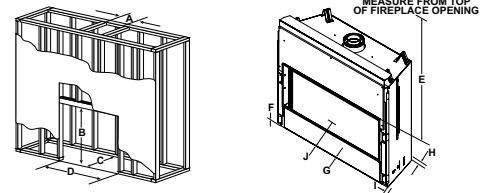
FRONT VIEW

RIGHT SIDE VIEW



FRAMING DIMENSIONS (DRAWINGS SHOWN ON RIGHT)

MODEL	A	B	C	D	E	F	G	H	I	J
COSMO 42	8-5/8 (219mm)	42-1/4 (1073mm)	18-1/4 (464mm)	50 (1270mm)	31 (787mm)	0 (0mm)	0 (0mm)	1 (25mm)	1 (25mm)	36 (914mm)
COSMO 32	8-5/8 (219mm)	36-1/2 (927mm)	18-1/4 (464mm)	37-3/4 (959mm)	31 (787mm)	0 (0mm)	0 (0mm)	1 (25mm)	1/2 (13mm)	36 (914mm)



Dimensions in diagrams are in inches and millimeters. Product information is not complete and is subject to change without notice. Product installation must adhere strictly to instructions shipped with product. We recommend measuring individual units at installation. Assumes the use of 1/2" sheetrock. NOTE: Combustible material should not cover the face. Make sure you do NOT cover the decorative door opening.

Refer to installation manual for detailed specifications on installing this product. Heat & Glo reserves the right to update units periodically. The flame and ember appearance may vary based on the type of fuel burned and the venting configuration used. Actual product appearance, including flame, may differ from product images.

¹ Dimensions shown in diagram are opening size, not glass size.

U.S. EFFICIENCIES

Steady State - Since most homeowners use their fireplaces for an extended time while they are in the room, Steady State measures how efficiently your fireplace converts fuel to heat once it is warmed up and running in a "steady state".

AFUE - AFUE rating is more typically used with appliances, like your furnace, that continually cycle on and off to maintain a constant temperature.

RATING	COSMO 42	COSMO 32
STEADY STATE	73% (NG)	60% (NG)
AFUE	56% (NG)	57% (NG)

CANADA EFFICIENCIES

EnerGuide (CSA P.4.1-02) - EnerGuide is a rating used in Canada to measure annual fireplace efficiency.

RATING	COSMO 42	COSMO 32
ENERGUIDE (CSA P.4.1-02)	57% (NG)	57% (NG)

For complete information on this model, please contact us at:

HEAT & GLO
No one builds a better fire

A brand of Hearth & Home Technologies®
7571 215th Street West, Lakeville, MN 55044
Web: heatnglo.com
Phone: (888) 427-3973 (952) 985-6000
E-mail: info@heatnglo.com

facebook.com/HeatandGlo
twitter.com/HeatandGlo
youtube.com/HeatandGlo

LIMITED LIFETIME WARRANTY²

The strongest in the industry, Heat & Glo provides a limited lifetime warranty on the most important aspects: firebox and heat exchanger.

² For full warranty details see heatnglo.com. Fireplace glass and other surfaces get extremely HOT and can cause severe burns if touched. Do not remove the protective safety screen from the front of the glass. Keep a safe distance away. To learn more visit www.heatnglo.com/fireplace-safety

